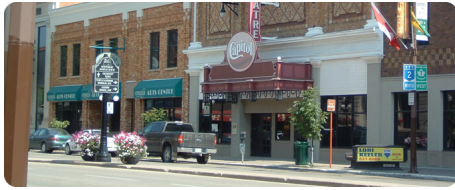


---

## [Moose Jaw Economic Development](#) [1]



Moose Jaw is a regional and provincial service centre for Saskatchewan’s thriving agribusiness community. The strength of the agribusiness is balanced with a diversified local economy, including retail, tourism, and manufacturing.

Moose Jaw is well-positioned for growth and poised for future development. Moose Jaw has competitive commercial taxes and attractive residential real estate incentives. It is a thriving, vibrant and progressive community with positive economic indicators for growth in employment, commercial development and tourism.

### **Essential links**

- [City of Moose Jaw website](#) [2]
- [The Moose Jaw Advantage](#) [3]
- [Strategic Plan](#) [4]

### **Taxation**

- [Property Taxes](#) [5]
- [Municipal Taxation](#) [6]
- [Provincial Taxation](#) [7]

### **Incentives**

- [Housing Incentive Program](#) [8]
- [Rental Construction Incentive](#) [9]
- [Tax Phase-In Policy](#) [10]
- [Job Creation Tax Incentive](#) [11]
- [Reconstruction of Existing Buildings Tax Incentive](#) [12]

### **Utility Rates**

- [City of Moose Jaw utility rates](#) [13]

---

## Tourism

- [Tourism Moose Jaw](#) [14]

## Community profiles

- [Quality of life presentation](#) [15]
- [Regional economic development profile](#) [16]

**Source URL:** <http://www.southcentralenterprise.ca/moose-jaw-economic-development>

### Links:

- [1] <http://www.southcentralenterprise.ca/moose-jaw-economic-development>
- [2] <http://www.moosejaw.ca>
- [3] <http://www.southcentralenterprise.ca/sites/default/files/attachments/The%20Moose%20Jaw%20Advantage.pdf>
- [4] [http://moosejaw.ca/business/pdf/2011\\_economic\\_deve\\_operation\\_plan.pdf](http://moosejaw.ca/business/pdf/2011_economic_deve_operation_plan.pdf)
- [5] <http://www.southcentralenterprise.ca/investor-pathways/taxes/property-taxes>
- [6] <http://www.southcentralenterprise.ca/investor-pathways/taxes/municipal-taxation>
- [7] <http://www.southcentralenterprise.ca/investor-pathways/taxes/provincial-taxation>
- [8] <http://www.moosejaw.ca/cityhall/engineers/planning/landdiv/housingincentive.shtml>
- [9] [http://moosejaw.ca/cityhall/engineers/planning/pdf/Rental\\_Construction\\_Incentive.pdf](http://moosejaw.ca/cityhall/engineers/planning/pdf/Rental_Construction_Incentive.pdf)
- [10] [http://www.moosejaw.ca/cityhall/finance/treasury/taxphase\\_in.shtml](http://www.moosejaw.ca/cityhall/finance/treasury/taxphase_in.shtml)
- [11] [http://www.moosejaw.ca/cityhall/finance/treasury/pdf/tax\\_phase\\_in\\_policy\\_%20job\\_creation\\_application.pdf](http://www.moosejaw.ca/cityhall/finance/treasury/pdf/tax_phase_in_policy_%20job_creation_application.pdf)
- [12] [http://www.moosejaw.ca/cityhall/finance/treasury/pdf/Reconstruction\\_of\\_Existing\\_Buildings\\_Policy.pdf](http://www.moosejaw.ca/cityhall/finance/treasury/pdf/Reconstruction_of_Existing_Buildings_Policy.pdf)
- [13] <http://moosejaw.ca/cityhall/finance/treasury/utills.shtml>
- [14] <http://www.tourismmoosejaw.ca/>
- [15] <http://www.constructiondigital.com/magazines/3263>
- [16] <http://www.southcentralenterprise.ca/sites/default/files/attachments/MJ%20REDA%20Profile.pdf>