

**Regional Profile**

---

**South Central Enterprise Region**

---

---

**Theme 2: Population by Age and Gender**

---

	Counts				Share of Total			
	1991	1996	2001	2006	1991	1996	2001	2006
<b>Saskatchewan</b>								
Men	490,780	489,430	481,755	475,325	49.6%	49.4%	49.2%	49.1%
<u>Women</u>	<u>498,150</u>	<u>500,815</u>	<u>497,180</u>	<u>492,920</u>	<u>50.4%</u>	<u>50.6%</u>	<u>50.8%</u>	<u>50.9%</u>
Total	988,930	990,240	978,935	968,155	100%	100%	100%	100%
Under 5	78,170	70,275	60,940	57,495	7.9%	7.1%	6.2%	5.9%
5 to 9	81,250	78,020	69,330	61,065	8.2%	7.9%	7.1%	6.3%
10 to 14	78,045	80,290	76,960	69,135	7.9%	8.1%	7.9%	7.1%
15 to 19	73,145	76,595	78,315	74,900	7.4%	7.7%	8.0%	7.7%
20 to 24	64,485	64,755	65,925	67,245	6.5%	6.5%	6.7%	6.9%
25 to 29	76,285	60,005	57,330	58,245	7.7%	6.1%	5.9%	6.0%
30 to 34	81,655	73,995	57,800	54,935	8.3%	7.5%	5.9%	5.7%
35 to 39	75,880	79,125	72,125	56,555	7.7%	8.0%	7.4%	5.8%
40 to 44	63,170	73,160	77,205	71,320	6.4%	7.4%	7.9%	7.4%
45 to 49	48,690	60,745	71,410	75,785	4.9%	6.1%	7.3%	7.8%
50 to 54	42,820	46,690	59,470	70,230	4.3%	4.7%	6.1%	7.3%
55 to 59	42,350	40,960	45,245	58,225	4.3%	4.1%	4.6%	6.0%
60 to 64	43,055	40,000	39,315	43,710	4.4%	4.0%	4.0%	4.5%
65 to 74	77,375	75,975	72,585	70,885	7.8%	7.7%	7.4%	7.3%
75 to 84	47,820	51,950	53,890	54,595	4.8%	5.2%	5.5%	5.6%
<u>85 plus</u>	<u>14,730</u>	<u>17,680</u>	<u>21,090</u>	<u>23,820</u>	<u>1.5%</u>	<u>1.8%</u>	<u>2.2%</u>	<u>2.5%</u>
Total	988,930	990,240	978,935	968,155	100.0%	100.0%	100.0%	100.0%

**South Central Enterprise Region**

Men	29,320	28,275	26,550	25,280	49.6%	49.4%	49.2%	48.8%
<u>Women</u>	<u>29,785</u>	<u>28,950</u>	<u>27,455</u>	<u>26,500</u>	<u>50.4%</u>	<u>50.6%</u>	<u>50.8%</u>	<u>51.2%</u>
Total	59,105	57,245	54,005	51,770	100%	100%	100%	100%
Under 5	4,190	3,470	2,780	2,700	7.1%	6.1%	5.2%	5.2%
5 to 9	4,745	4,145	3,255	2,815	8.0%	7.2%	6.0%	5.4%
10 to 14	4,525	4,680	4,075	3,360	7.6%	8.2%	7.6%	6.5%
15 to 19	4,005	4,360	4,450	3,870	6.8%	7.6%	8.2%	7.5%
20 to 24	3,225	3,145	3,090	3,000	5.4%	5.5%	5.7%	5.8%
25 to 29	4,335	3,005	2,635	2,695	7.3%	5.2%	4.9%	5.2%
30 to 34	4,910	4,145	2,775	2,525	8.3%	7.2%	5.1%	4.9%
35 to 39	4,430	4,685	3,865	2,740	7.5%	8.2%	7.2%	5.3%
40 to 44	3,590	4,335	4,470	3,785	6.1%	7.6%	8.3%	7.3%
45 to 49	2,765	3,385	4,105	4,300	4.7%	5.9%	7.6%	8.3%
50 to 54	2,425	2,655	3,350	4,080	4.1%	4.6%	6.2%	7.9%
55 to 59	2,660	2,250	2,555	3,285	4.5%	3.9%	4.7%	6.3%
60 to 64	2,955	2,525	2,200	2,515	5.0%	4.4%	4.1%	4.9%
65 to 74		5,400	4,780	4,285		9.4%	8.9%	8.3%
75 to 84	} 10,475	3,840	4,090	3,925	} 17.7%	6.7%	7.6%	7.6%
<u>85 plus</u>		<u>1,235</u>	<u>1,480</u>	<u>1,860</u>		<u>2.2%</u>	<u>2.7%</u>	<u>3.6%</u>
Total	59,235	57,260	53,955	51,740	100.0%	100.0%	100.0%	100.0%

## South Central Enterprise Region

## Age and Gender

	Counts				Share of Total			
	1991	1996	2001	2006	1991	1996	2001	2006
<b>Urban Areas*</b>								
Men	17,915	17,445	16,685	16,505	48.8%	48.5%	48.2%	47.9%
<u>Women</u>	<u>18,825</u>	<u>18,520</u>	<u>17,925</u>	<u>17,915</u>	<u>51.2%</u>	<u>51.5%</u>	<u>51.8%</u>	<u>52.0%</u>
Total	36,740	35,955	34,620	34,425	100%	100%	100%	100%
Under 5	2,670	2,285	1,885	1,905	7.3%	6.4%	5.4%	5.5%
5 to 14	5,370	5,285	4,600	4,170	14.6%	14.7%	13.3%	12.1%
15 to 24	4,725	4,800	4,930	4,695	12.9%	13.3%	14.2%	13.7%
25 to 34	6,195	4,955	3,860	3,845	16.9%	13.8%	11.1%	11.2%
35 to 44	4,920	5,580	5,340	4,475	13.4%	15.5%	15.4%	13.0%
45 to 54	3,080	3,670	4,570	5,165	8.4%	10.2%	13.2%	15.0%
55 to 64	3,315	2,875	2,910	3,555	9.0%	8.0%	8.4%	10.3%
65 to 74	} 6,455	3,230	2,910	2,730	} 17.6%	9.0%	8.4%	7.9%
<u>75 plus</u>		<u>3,280</u>	<u>3,620</u>	<u>3,830</u>		<u>9.1%</u>	<u>10.5%</u>	<u>11.1%</u>
Total	36,730	35,960	34,625	34,370	100.0%	100.0%	100.0%	100.0%
<b>Towns/Villages</b>								
Men	5,295	5,255	4,885	4,350	48.2%	48.2%	48.2%	47.9%
<u>Women</u>	<u>5,700</u>	<u>5,650</u>	<u>5,240</u>	<u>4,760</u>	<u>51.8%</u>	<u>51.8%</u>	<u>51.7%</u>	<u>52.4%</u>
Total	10,995	10,910	10,130	9,085	100%	100%	100%	100%
Under 5	735	605	495	445	6.7%	5.5%	4.9%	4.9%
5 to 14	1,625	1,680	1,360	975	14.8%	15.3%	13.4%	10.6%
15 to 24	1,155	1,310	1,260	1,135	10.5%	11.9%	12.4%	12.4%
25 to 34	1,490	1,190	890	775	13.5%	10.9%	8.8%	8.5%
35 to 44	1,335	1,555	1,415	1,015	12.1%	14.2%	14.0%	11.1%
45 to 54	845	1,075	1,275	1,455	7.7%	9.8%	12.6%	15.9%
55 to 64	1,075	845	860	1,085	9.8%	7.7%	8.5%	11.8%
65 to 74	} 2,755	1,275	1,050	800	} 25.0%	11.6%	10.4%	8.7%
<u>75 plus</u>		<u>1,430</u>	<u>1,535</u>	<u>1,475</u>		<u>13.0%</u>	<u>15.1%</u>	<u>16.1%</u>
Total	11,015	10,965	10,140	9,160	100.0%	100.0%	100.0%	100.0%
<b>Rural Municipalities</b>								
Men	6,110	5,575	4,980	4,425	53.7%	53.7%	53.8%	53.6%
<u>Women</u>	<u>5,260</u>	<u>4,780</u>	<u>4,290</u>	<u>3,825</u>	<u>46.3%</u>	<u>46.1%</u>	<u>46.4%</u>	<u>46.3%</u>
Total	11,370	10,380	9,255	8,260	100%	100%	100%	100%
Under 5	785	580	400	350	6.8%	5.6%	4.4%	4.3%
5 to 14	2,275	1,860	1,370	1,030	19.8%	18.0%	14.9%	12.5%
15 to 24	1,350	1,395	1,350	1,040	11.7%	13.5%	14.7%	12.7%
25 to 34	1,560	1,005	660	600	13.6%	9.7%	7.2%	7.3%
35 to 44	1,765	1,885	1,580	1,035	15.4%	18.2%	17.2%	12.6%
45 to 54	1,265	1,295	1,610	1,760	11.0%	12.5%	17.5%	21.4%
55 to 64	1,225	1,055	985	1,160	10.7%	10.2%	10.7%	14.1%
65 to 74	} 1,265	895	820	755	} 11.0%	8.7%	8.9%	9.2%
<u>75 plus</u>		<u>365</u>	<u>415</u>	<u>480</u>		<u>3.5%</u>	<u>4.5%</u>	<u>5.8%</u>
Total	11,490	10,335	9,190	8,210	100.0%	100.0%	100.0%	100.0%

\* Regina, Saskatoon, Prince Albert, Moose Jaw, Estevan, Humboldt, Melfort, Melville, North Battleford, Swift Current, Weyburn, Yorkton, and the Saskatchewan portion of Lloydminster. Includes surrounding "bedroom communities".

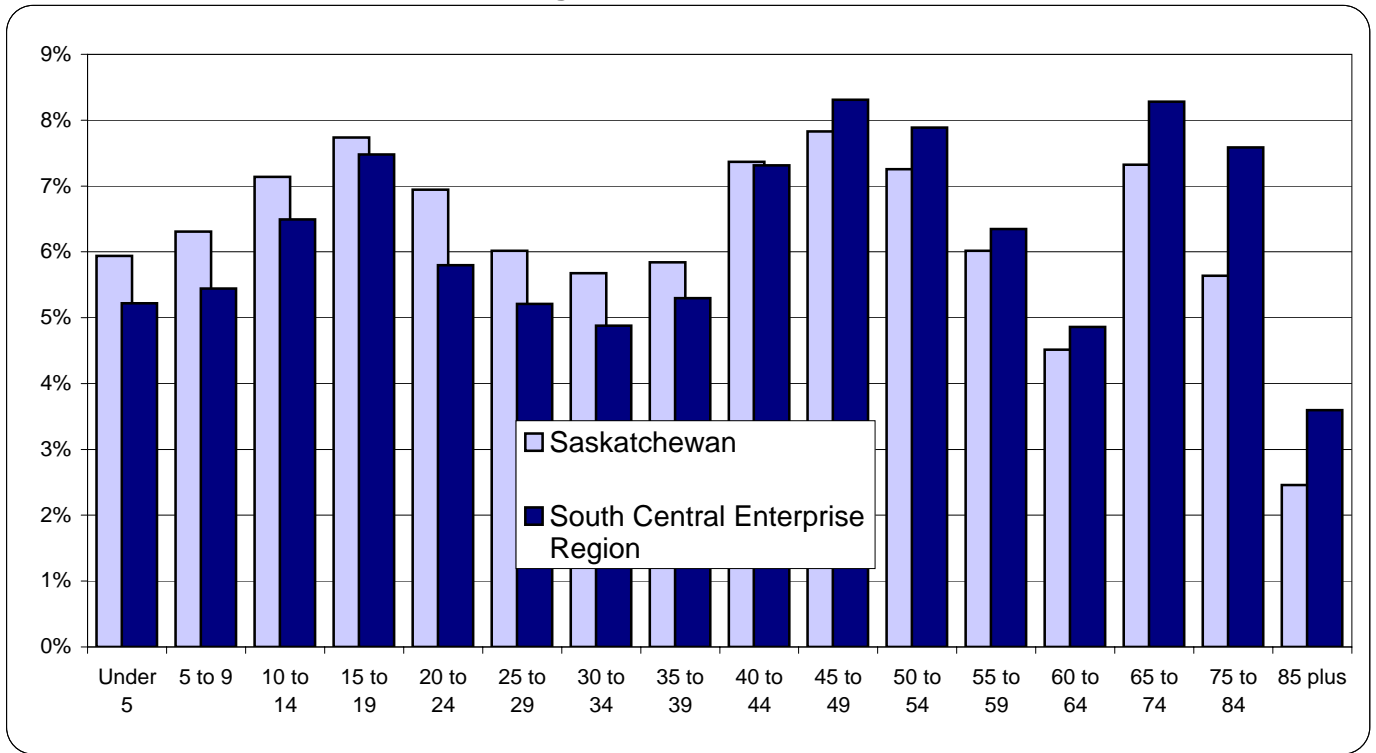
**South Central Enterprise Region**

**Age and Gender**

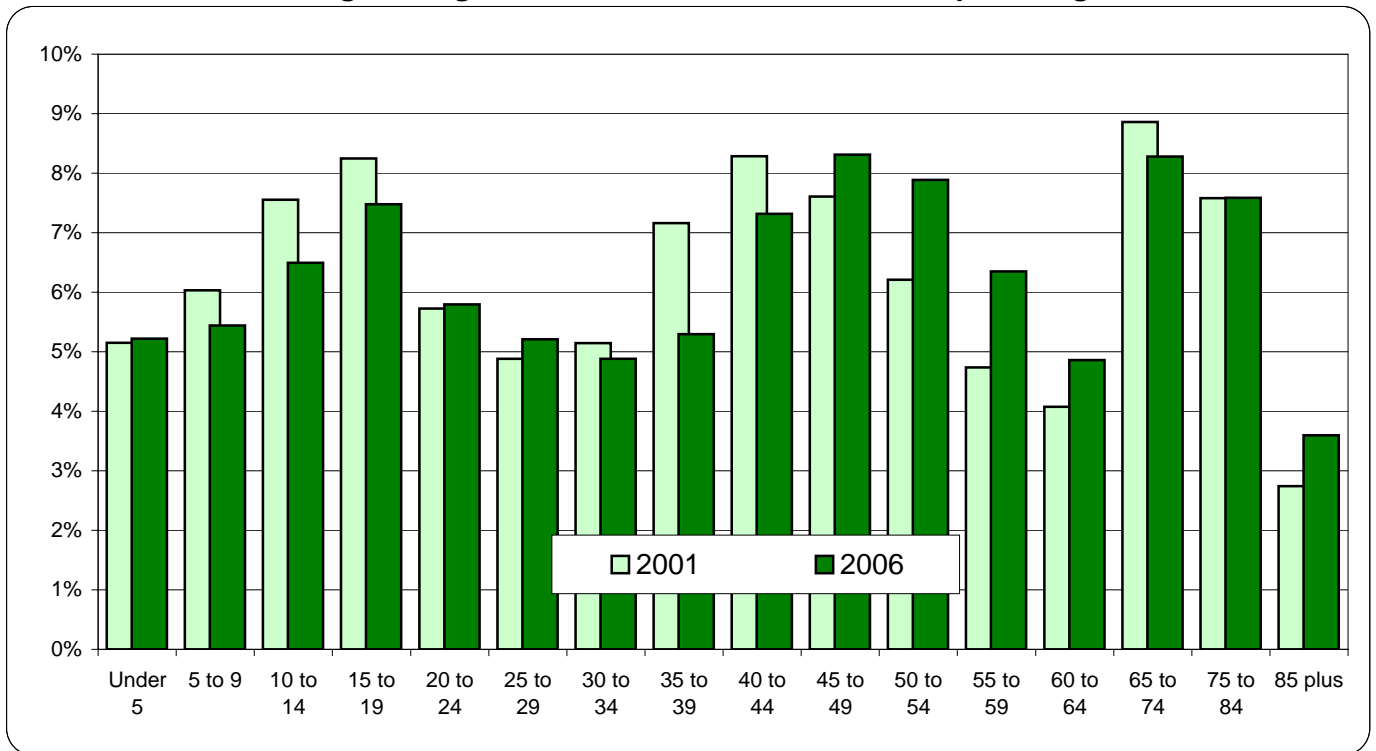
	Counts				Share of Total			
	1991	1996	2001	2006	1991	1996	2001	2006
<b>Southern Reserves</b>								
Men	...	...	...	...	...	...	...	...
<u>Women</u>	...	...	...	...	...	...	...	...
Total	...	...	...	...	...	...	...	...
Under 5	...	...	...	...	...	...	...	...
5 to 14	...	...	...	...	...	...	...	...
15 to 24	...	...	...	...	...	...	...	...
25 to 34	...	...	...	...	...	...	...	...
35 to 44	...	...	...	...	...	...	...	...
45 to 54	...	...	...	...	...	...	...	...
55 to 64	...	...	...	...	...	...	...	...
65 to 74	...	...	...	...	...	...	...	...
<u>75 plus</u>	...	...	...	...	...	...	...	...
Total	...	...	...	...	...	...	...	...
<b>North**</b>								
Men	...	...	...	...	...	...	...	...
<u>Women</u>	...	...	...	...	...	...	...	...
Total	...	...	...	...	...	...	...	...
Under 5	...	...	...	...	...	...	...	...
5 to 14	...	...	...	...	...	...	...	...
15 to 24	...	...	...	...	...	...	...	...
25 to 34	...	...	...	...	...	...	...	...
35 to 44	...	...	...	...	...	...	...	...
45 to 54	...	...	...	...	...	...	...	...
55 to 64	...	...	...	...	...	...	...	...
65 to 74	...	...	...	...	...	...	...	...
<u>75 plus</u>	...	...	...	...	...	...	...	...
Total	...	...	...	...	...	...	...	...

\*\* Census Division #18, also called the Northern Administration District, including towns/villages and Reserves

Age Distribution in 2006

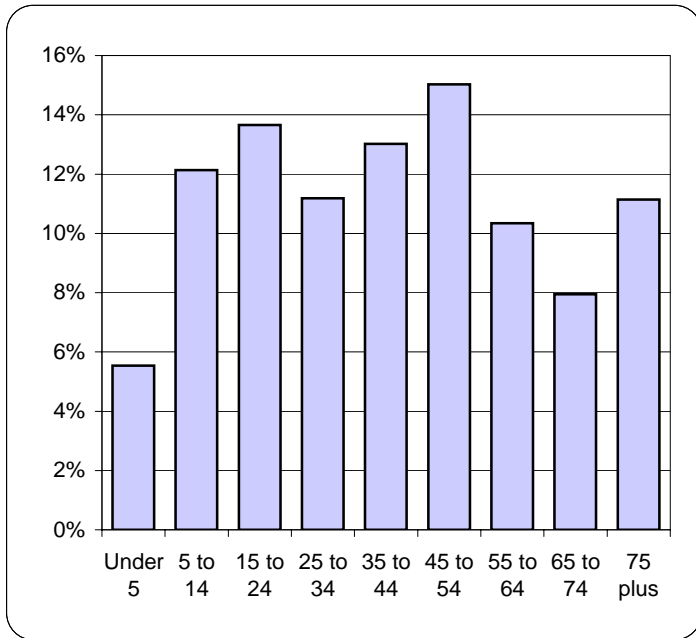


Changes in Age Distribution: South Central Enterprise Region

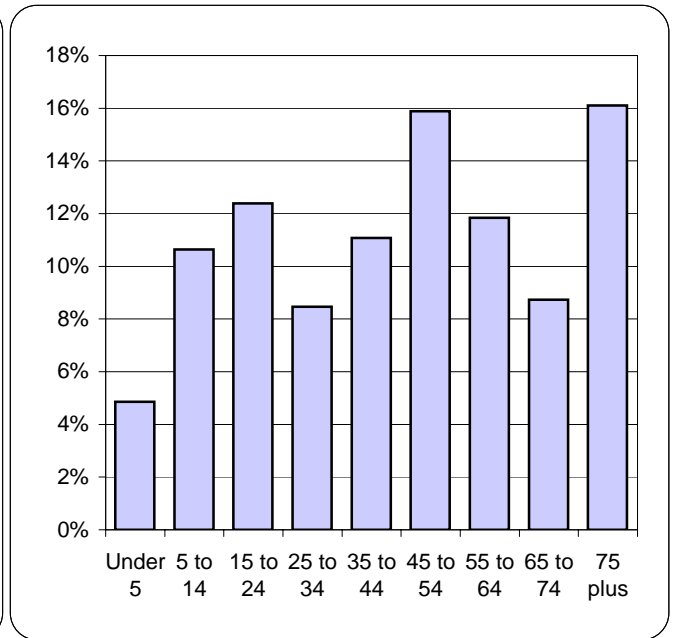


Age Distribution in 2006 by Community Type  
South Central Enterprise Region

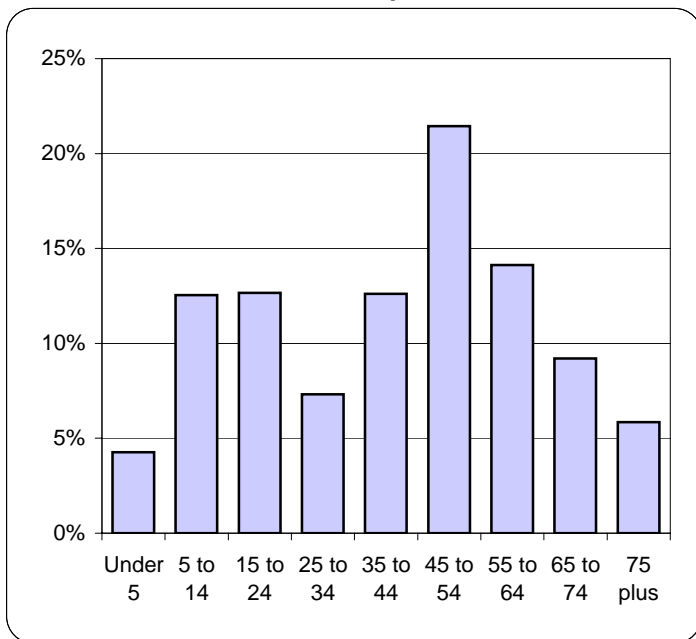
Urban Areas



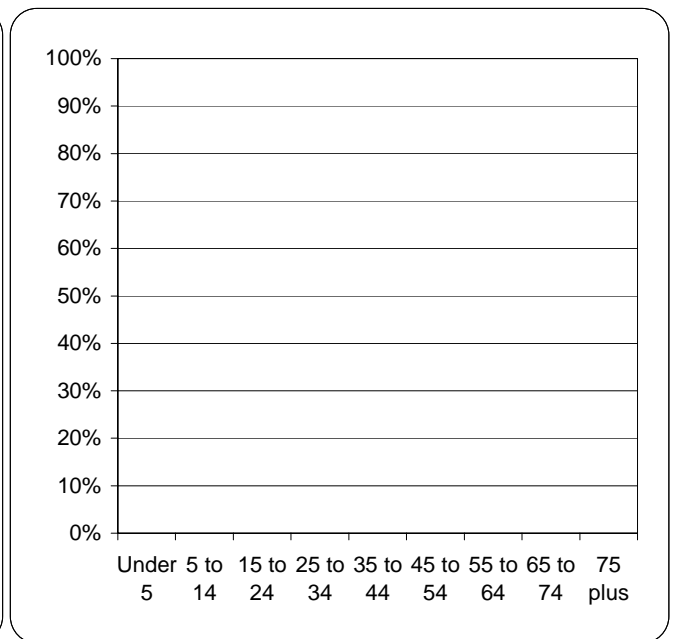
Towns/Villages



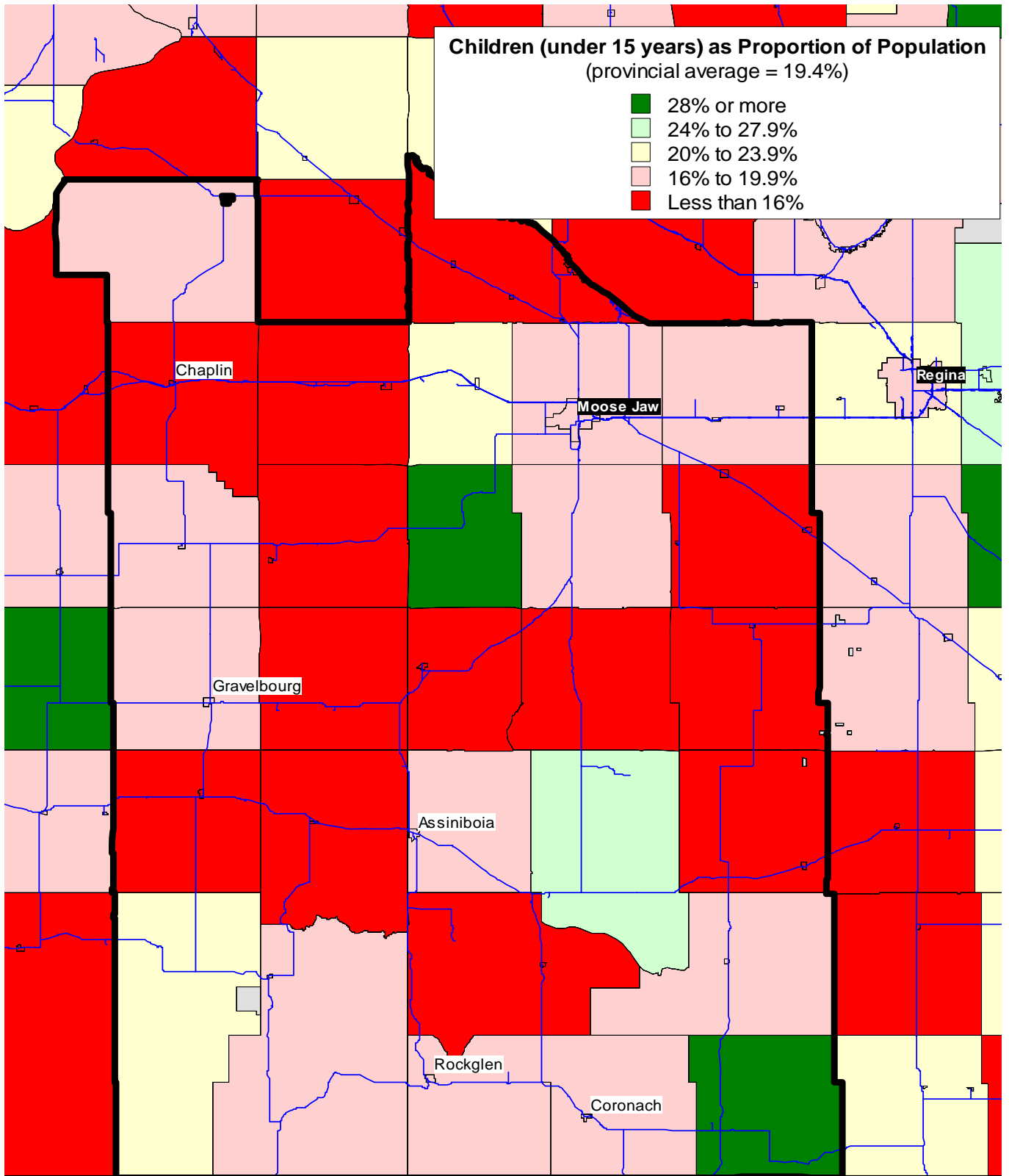
Rural Municipalities



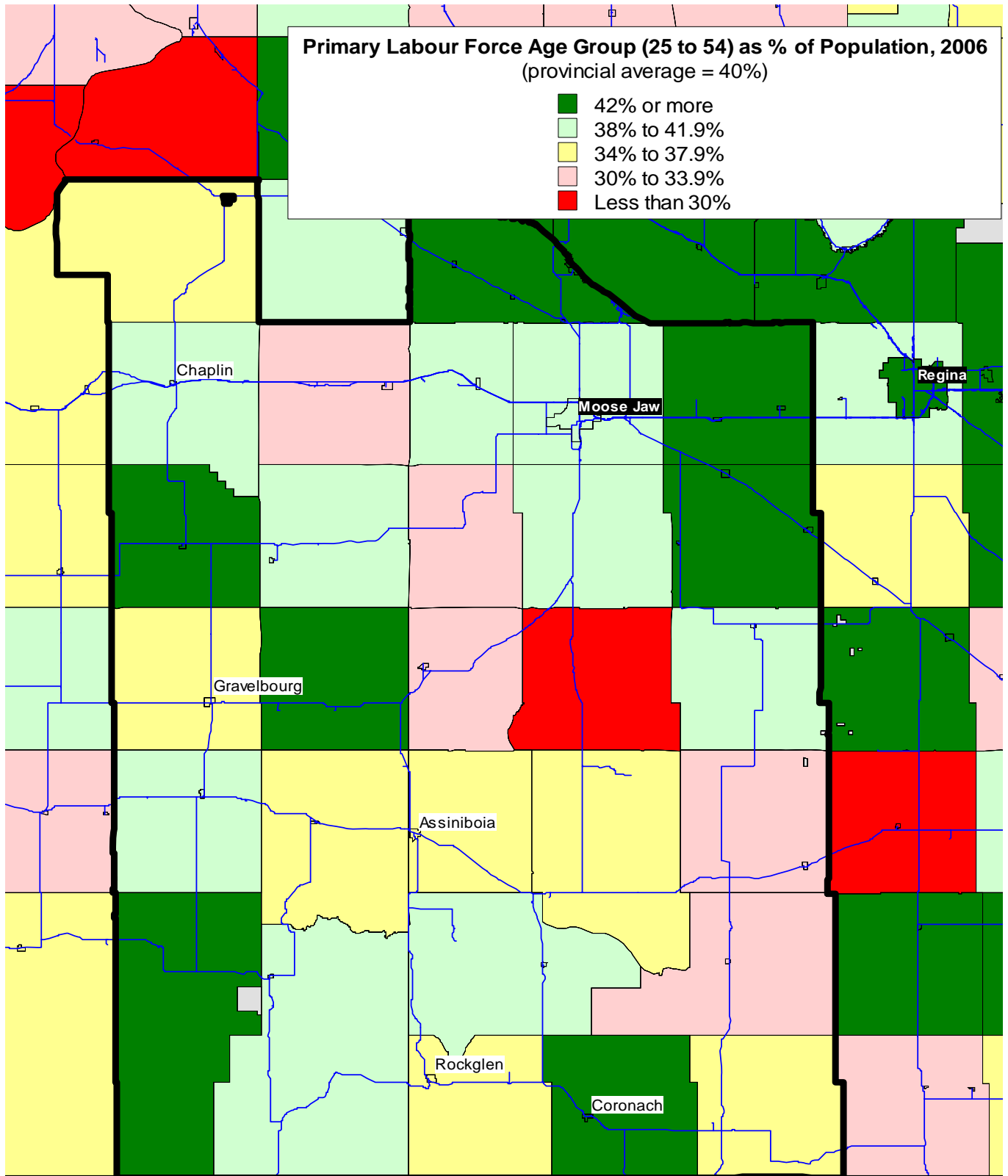
Southern Reserves



Children (under 15) by Rural Municipality, 2006



Primary Labour Force Age Group (25 to 54) by Rural Municipality, 2006



Seniors (65 plus) by Rural Municipality, 2006

