

Regional Profile

South Central Enterprise Region

Theme 8: Labour Force and Employment

	Counts				Average annual change		
	1991	1996	2001	2006	1991-1996	1996-2001	2001-2006
Adult Population (15 & older)							
Saskatchewan							
Employed	470,475	467,285	479,740	494,900	-0.1%	0.5%	0.6%
Unemployed	<u>35,820</u>	<u>36,215</u>	<u>32,505</u>	<u>29,405</u>	<u>0.2%</u>	<u>-2.1%</u>	<u>-2.0%</u>
In the labour force	506,300	503,500	512,240	524,305	-0.1%	0.3%	0.5%
Not in the labour force	<u>232,380</u>	<u>244,630</u>	<u>243,280</u>	<u>241,930</u>	<u>1.0%</u>	<u>-0.1%</u>	<u>-0.1%</u>
Adult population	738,680	748,135	755,520	766,230	0.3%	0.2%	0.3%
Employment rate	63.7%	62.4%	63.5%	64.6%			
South Central Enterprise Region							
Employed	28,250	26,935	26,730	26,510	-0.9%	-0.2%	-0.2%
Unemployed	<u>1,580</u>	<u>1,635</u>	<u>1,430</u>	<u>1,375</u>	<u>0.7%</u>	<u>-2.6%</u>	<u>-0.8%</u>
In the labour force	29,830	28,570	28,160	27,885	-0.9%	-0.3%	-0.2%
Not in the labour force	<u>14,520</u>	<u>15,245</u>	<u>14,505</u>	<u>13,615</u>	<u>1.0%</u>	<u>-1.0%</u>	<u>-1.3%</u>
Adult population	44,350	43,815	42,665	41,500	-0.2%	-0.5%	-0.6%
Employment rate	63.7%	61.5%	62.7%	63.9%			
Youth Population (15 to 24 years)							
Saskatchewan							
Employed	79,740	78,555	81,910	83,595	-0.3%	0.8%	0.4%
Unemployed	<u>11,150</u>	<u>13,080</u>	<u>11,855</u>	<u>10,720</u>	<u>3.2%</u>	<u>-1.9%</u>	<u>-2.0%</u>
In the labour force	90,895	91,630	93,770	94,315	0.2%	0.5%	0.1%
Not in the labour force	<u>46,710</u>	<u>49,565</u>	<u>49,085</u>	<u>47,375</u>	<u>1.2%</u>	<u>-0.2%</u>	<u>-0.7%</u>
Youth Population	137,605	141,190	142,850	141,690	0.5%	0.2%	-0.2%
Employment rate	57.9%	55.6%	57.3%	59.0%			
South Central Enterprise Region							
Employed	4,160	4,205	4,420	4,095	0.2%	1.0%	-1.5%
Unemployed	<u>410</u>	<u>670</u>	<u>590</u>	<u>650</u>	<u>10.3%</u>	<u>-2.5%</u>	<u>2.0%</u>
In the labour force	4,570	4,875	5,010	4,745	1.3%	0.5%	-1.1%
Not in the labour force	<u>2,460</u>	<u>2,740</u>	<u>2,520</u>	<u>2,105</u>	<u>2.2%</u>	<u>-1.7%</u>	<u>-3.5%</u>
Youth Population	7,030	7,615	7,530	6,850	1.6%	-0.2%	-1.9%
Employment rate	59.2%	55.2%	58.7%	59.8%			
Adult Population (25 years & older)							
Saskatchewan							
Employed	390,735	388,730	397,830	411,305	-0.1%	0.5%	0.7%
Unemployed	<u>24,670</u>	<u>23,135</u>	<u>20,650</u>	<u>18,685</u>	<u>-1.3%</u>	<u>-2.2%</u>	<u>-2.0%</u>
In the labour force	415,405	411,870	418,470	429,985	-0.2%	0.3%	0.5%
Not in the labour force	<u>185,670</u>	<u>195,065</u>	<u>194,195</u>	<u>194,555</u>	<u>1.0%</u>	<u>-0.1%</u>	<u>0.0%</u>
Adult population	601,075	606,945	612,670	624,545	0.2%	0.2%	0.4%
Employment rate	65.0%	64.0%	64.9%	65.9%			0%
South Central Enterprise Region							
Employed	24,090	22,730	22,310	22,415	-0.5%	-0.1%	0.1%
Unemployed	<u>1,170</u>	<u>965</u>	<u>840</u>	<u>725</u>	<u>-3.8%</u>	<u>-2.7%</u>	<u>-3.3%</u>
In the labour force	25,260	23,695	23,150	23,140	-1.3%	-0.5%	-0.9%
Not in the labour force	<u>12,060</u>	<u>12,505</u>	<u>11,985</u>	<u>11,510</u>	<u>0.7%</u>	<u>-0.8%</u>	<u>-0.1%</u>
Adult population	37,320	36,200	35,135	34,650	-0.6%	-0.6%	-0.6%
Employment rate	64.5%	62.8%	63.5%	64.7%			

	Counts				Average annual change		
	1991	1996	2001	2006	1991-1996	1996-2001	2001-2006
Experienced Labour Force* by Class							
Saskatchewan							
Employees	395,395	389,080	404,360	430,030	-0.3%	0.8%	1.2%
Self employed without paid help	64,050	66,035	63,375	56,310	<u>0.6%</u>	<u>-0.8%</u>	<u>-2.3%</u>
Self employed with paid help	28,950	31,480	29,685	27,095	1.7%	-1.2%	-1.8%
<u>Unpaid family workers</u>	<u>11,475</u>	<u>6,840</u>	<u>6,600</u>	<u>4,050</u>	<u>-9.8%</u>	<u>-0.7%</u>	<u>-9.3%</u>
Total	499,865	493,430	504,015	517,475	-0.3%	0.4%	0.5%
South Central Enterprise Region							
Employees	...	21,545	21,455	22,155	...	-0.1%	0.6%
Self employed without paid help	...	4,170	4,070	3,635	...	<u>-0.5%</u>	<u>-2.2%</u>
Self employed with paid help	...	1,845	1,700	1,420	...	-1.6%	-3.5%
<u>Unpaid family workers</u>	...	<u>465</u>	<u>515</u>	<u>295</u>	...	<u>2.1%</u>	<u>-10.5%</u>
Total	...	28,085	27,800	27,555	...	-0.2%	-0.2%
Experienced Labour Force* by Industry Group (see note on page 8.7)							
Saskatchewan							
Agriculture, forestry, fishing	93,185	80,560	72,735	60,210	-2.9%	-2.0%	-3.7%
Mining, oil and gas, utilities	12,000	12,035	19,335	24,095	0.1%	9.9%	4.5%
Construction	25,770	24,465	27,235	29,940	-1.0%	2.2%	1.9%
Manufacturing	26,990	31,240	29,380	29,870	3.0%	-1.2%	0.3%
Wholesale trade	20,805	23,060	19,720	19,100	2.1%	-3.1%	-0.6%
Retail trade	58,865	56,990	53,705	56,730	-0.6%	-1.2%	1.1%
Finance, insurance, real estate	22,750	22,725	25,290	25,280	-0.0%	2.2%	-0.0%
Business services	16,125	16,885	29,870	34,110	0.9%	12.1%	2.7%
Accommodation and food services	31,520	34,065	34,805	34,580	1.6%	0.4%	-0.1%
Other private sector services	68,130	70,575	68,465	71,530	0.7%	-0.6%	0.9%
Education services	37,640	36,815	36,580	40,315	-0.4%	-0.1%	2.0%
Health care and social assistance	48,815	53,270	55,630	58,405	1.8%	0.9%	1.0%
<u>Public administration</u>	<u>37,260</u>	<u>30,740</u>	<u>31,275</u>	<u>33,315</u>	<u>-3.8%</u>	<u>0.3%</u>	<u>1.3%</u>
Total	499,870	493,430	504,020	517,480	-0.3%	0.4%	0.5%
South Central Enterprise Region							
Agriculture, forestry, fishing	6,650	5,695	5,590	4,380	-3.1%	-0.4%	-4.8%
Mining, oil and gas, utilities	520	365	1,065	1,095	-6.8%	23.9%	0.6%
Construction	1,235	1,225	1,190	1,200	-0.2%	-0.6%	0.2%
Manufacturing	1,265	1,645	1,690	1,760	5.4%	0.5%	0.8%
Wholesale trade	670	955	625	605	7.3%	-8.1%	-0.6%
Retail trade	3,445	3,035	2,950	2,880	-2.5%	-0.6%	-0.5%
Finance, insurance, real estate	1,230	925	1,095	1,045	-5.5%	3.4%	-0.9%
Business services	440	535	1,290	1,375	4.0%	19.2%	1.3%
Accommodation and food services	1,650	1,710	1,875	1,985	0.7%	1.9%	1.1%
Other private sector services	4,225	4,235	3,805	4,295	0.0%	-2.1%	2.5%
Education services	2,065	2,180	2,045	2,180	1.1%	-1.3%	1.3%
Health care and social assistance	3,350	3,535	3,160	3,205	1.1%	-2.2%	0.3%
<u>Public administration</u>	<u>2,850</u>	<u>2,035</u>	<u>1,400</u>	<u>1,560</u>	<u>-6.5%</u>	<u>-7.2%</u>	<u>2.2%</u>
Total	29,595	28,075	27,780	27,565	-1.0%	-0.2%	-0.2%

* employed at the time of the census or in the previous eighteen months

	Counts				Average annual change			
	1991	1996	2001	2006	1991-1996	1996-2001	2001-2006	
Experienced Labour Force* by Occupation Group								
Saskatchewan								
Management occupations	40,505	34,235	42,625	41,595	-3.3%	4.5%	-0.5%	
Business, finance, administrative	75,195	77,820	74,710	80,525	0.7%	-0.8%	1.5%	
Natural/applied sciences & related	15,325	15,210	19,525	21,765	-0.2%	5.1%	2.2%	
Health occupations	27,465	26,890	29,815	32,210	-0.4%	2.1%	1.6%	
Social science, education, government, religion	31,185	32,145	38,835	42,840	0.6%	3.9%	2.0%	
Art, culture, recreation, sport	9,715	9,955	10,210	10,955	0.5%	0.5%	1.4%	
Sales clerks and cashiers	} 117,320	24,430	24,525	27,630	}	0.1%	2.4%	
Chefs, cooks, servers		20,240	18,520	16,995		-7.0%	-1.8%	-1.7%
Other sales and service**		81,545	75,210	75,975		-1.6%	0.2%	
Trades, transport and equipment operators and related	70,540	69,270	74,540	83,245	-0.4%	1.5%	2.2%	
Occupations unique to primary industry	97,265	82,835	79,955	67,660	-3.2%	-0.7%	-3.3%	
Occupations unique to processing, manufacturing utilities	<u>15,360</u>	<u>18,855</u>	<u>15,545</u>	<u>16,075</u>	<u>4.2%</u>	<u>-3.8%</u>	<u>0.7%</u>	
Total	499,870	493,435	504,020	517,480	-0.3%	0.4%	0.5%	
South Central Enterprise Region								
Management occupations	...	1,560	2,130	2,110	...	6.4%	-0.2%	
Business, finance, administrative	...	3,460	3,090	3,585	...	-2.2%	3.0%	
Natural/applied sciences & related	...	505	720	890	...	7.4%	4.3%	
Health occupations	...	1,920	1,890	1,810	...	-0.3%	-0.9%	
Social science, education, government, religion	...	1,625	1,715	1,925	...	1.1%	2.3%	
Art, culture, recreation, sport	...	415	440	605	...	1.2%	6.6%	
Sales clerks and cashiers	...	1,365	1,375	1,400	...	0.1%	0.4%	
Chefs, cooks, servers	...	1,240	980	940	...	-4.6%	-0.8%	
Other sales and service**	...	4,915	4,280	4,070	...	-2.7%	-1.0%	
Trades, transport and equipment operators and related	...	4,125	4,335	4,385	...	1.0%	0.2%	
Occupations unique to primary industry	...	5,635	5,895	4,680	...	0.9%	-4.5%	
Occupations unique to processing, manufacturing utilities	...	<u>1,170</u>	<u>1,025</u>	<u>1,025</u>	...	<u>-2.6%</u>	<u>0.0%</u>	
Total	...	28,085	27,810	27,540	...	-0.2%	-0.2%	

* employed at the time of the census or in the previous eighteen months

** other than sales clerks, cashiers, chefs, cooks, servers

	Counts				Average annual change		
	<u>1991</u>	<u>1996</u>	<u>2001</u>	<u>2006</u>	<u>1991-1996</u>	<u>1996-2001</u>	<u>2001-2006</u>
Employment by Work Location							
Saskatchewan							
At home	105,340	89,600	86,500	69,650	-3.2%	-0.7%	-4.2%
In community	269,865	251,590	259,070	265,680	-1.4%	0.6%	0.5%
Different community	80,115	91,665	93,435	110,540	2.7%	0.4%	3.4%
<u>No fixed workplace</u>	<u>5,155</u>	<u>34,430</u>	<u>40,730</u>	<u>49,025</u>	<u>46.2%</u>	<u>3.4%</u>	<u>3.8%</u>
Total	460,475	467,285	479,735	494,900	0.3%	0.5%	0.6%
South Central Enterprise Region							
At home	...	6,085	6,100	4,590	...	0.0%	-5.5%
In community	...	13,335	14,255	13,770	...	1.3%	-0.7%
Different community	...	5,780	4,540	5,710	...	-4.7%	4.7%
<u>No fixed workplace</u>	...	<u>1,755</u>	<u>1,830</u>	<u>2,480</u>	...	<u>0.8%</u>	<u>6.3%</u>
Total	...	26,955	26,725	26,550	...	-0.2%	-0.1%
Employment by Commuting Mode*							
Saskatchewan							
Private vehicle (drive or passenger)	...	319,390	338,715	367,080	...	1.2%	1.6%
Walk or bicycle	...	41,555	38,890	40,755	...	-1.3%	0.9%
<u>Other</u>	...	<u>15,900</u>	<u>14,760</u>	<u>16,375</u>	...	<u>-1.5%</u>	<u>2.1%</u>
Total	...	376,845	392,365	424,210	...	0.8%	1.6%
South Central Enterprise Region							
Private vehicle (drive or passenger)	...	17,515	17,850	19,145	...	0.4%	1.4%
Walk or bicycle	...	2,805	2,400	2,245	...	-3.1%	-1.3%
<u>Other</u>	...	<u>400</u>	<u>410</u>	<u>485</u>	...	<u>0.5%</u>	<u>3.4%</u>
Total	...	20,720	20,660	21,875	...	-0.1%	1.1%

* excluding those working at home; "other" includes public transit, motorcycle, taxicab

Notes re: Industry Breakdown

Because of changes from SIC to NAICS, the industry groupings are not strictly comparable from 1996 to 2001.

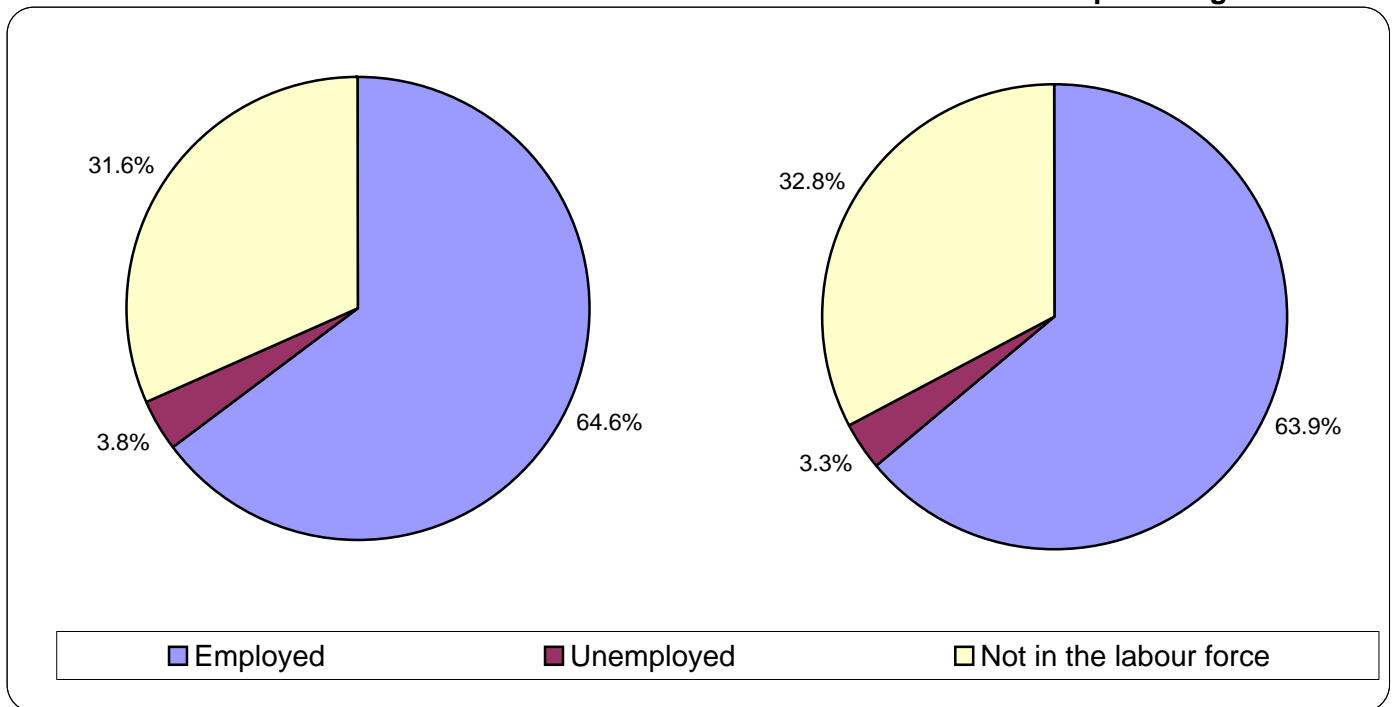
The following groupings were used for the tables.

	<u>1991 & 1996 (SIC)</u>	<u>2001 & 2006 (NAIC)</u>
Agriculture, forestry, fishing	A,B,C	11
Mining, oil and gas, utilities	D	21,22
Construction	F	23
Manufacturing	E	31-33
Wholesale/retail trade	I,J	41,44-45
Finance, insurance, real estate	K,L	52,53
Business services	M	54-56
Accommodation and food services	Q	72
Other private sector services	G,H,R	48,49,51,71,81
Education services	O	61
Health care and social assistance	P	62
Public administration	N	91

Labour Force Activity in May 2006 (15 & older)

Saskatchewan

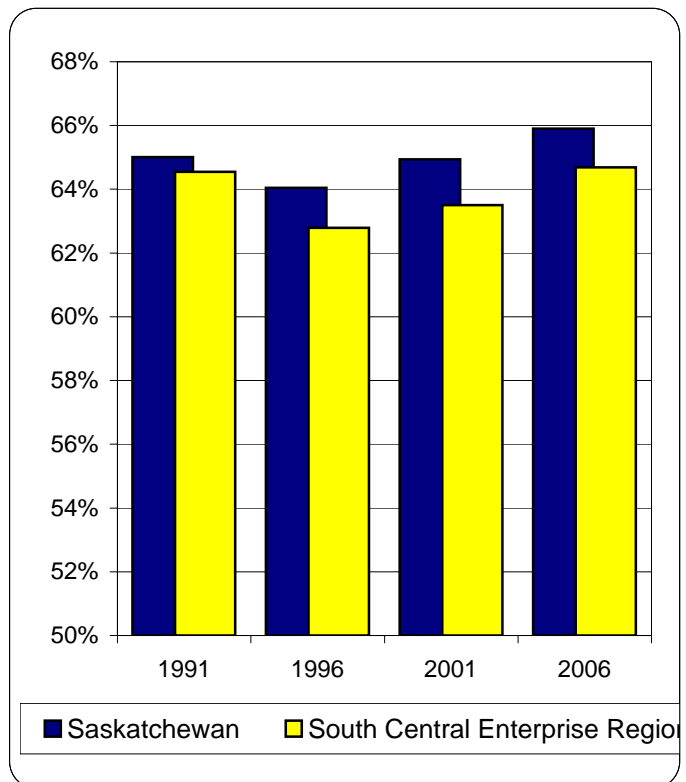
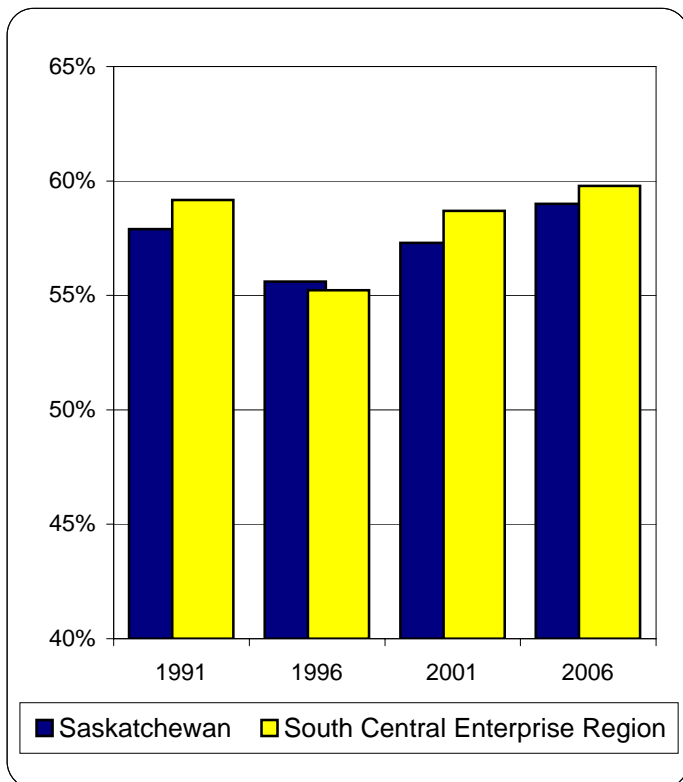
South Central Enterprise Region



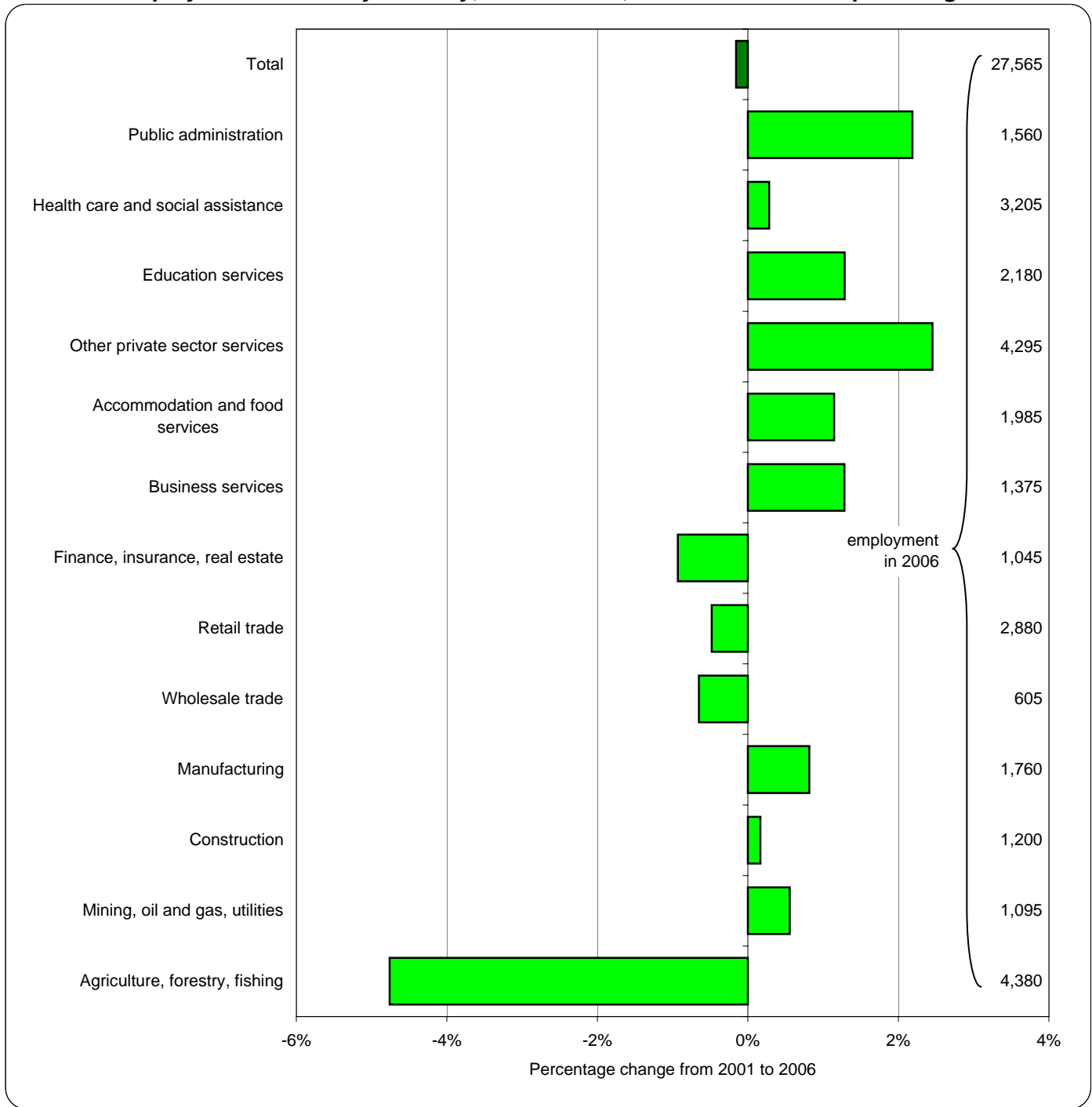
Employment Rates

Population 15 to 24 Years

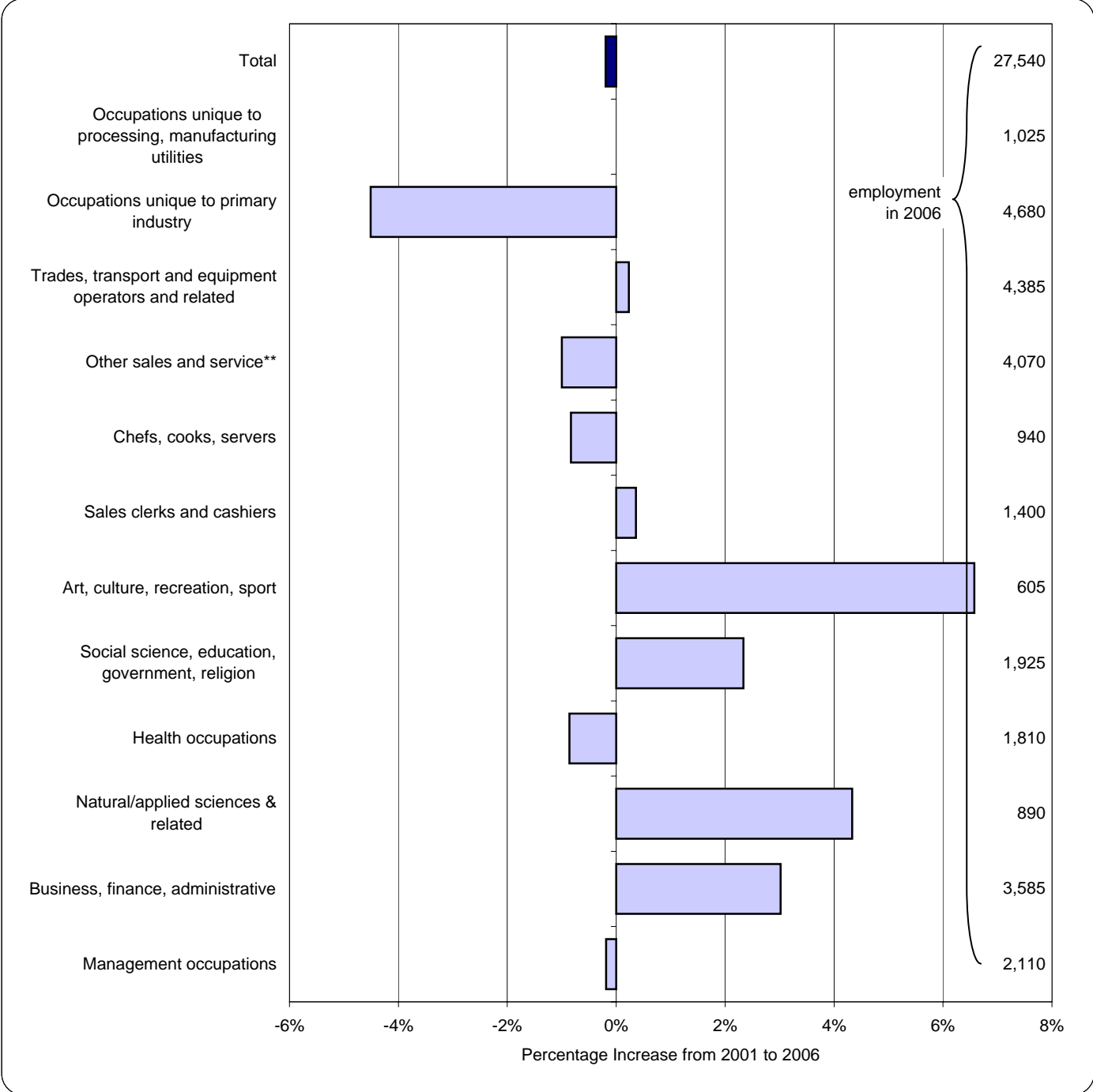
Population 25 and Older



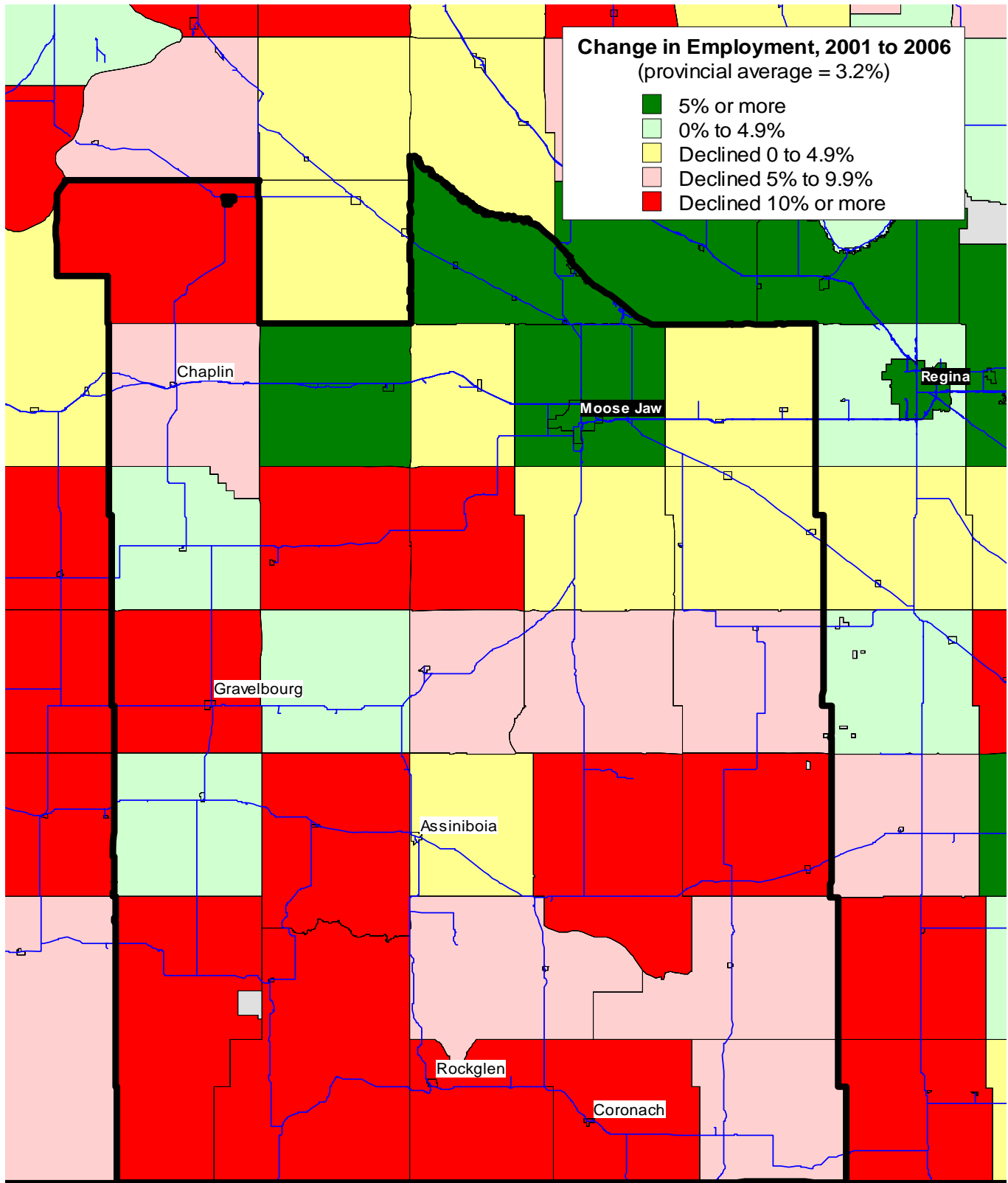
Employment Growth by Industry, 2001 to 2006, South Central Enterprise Region



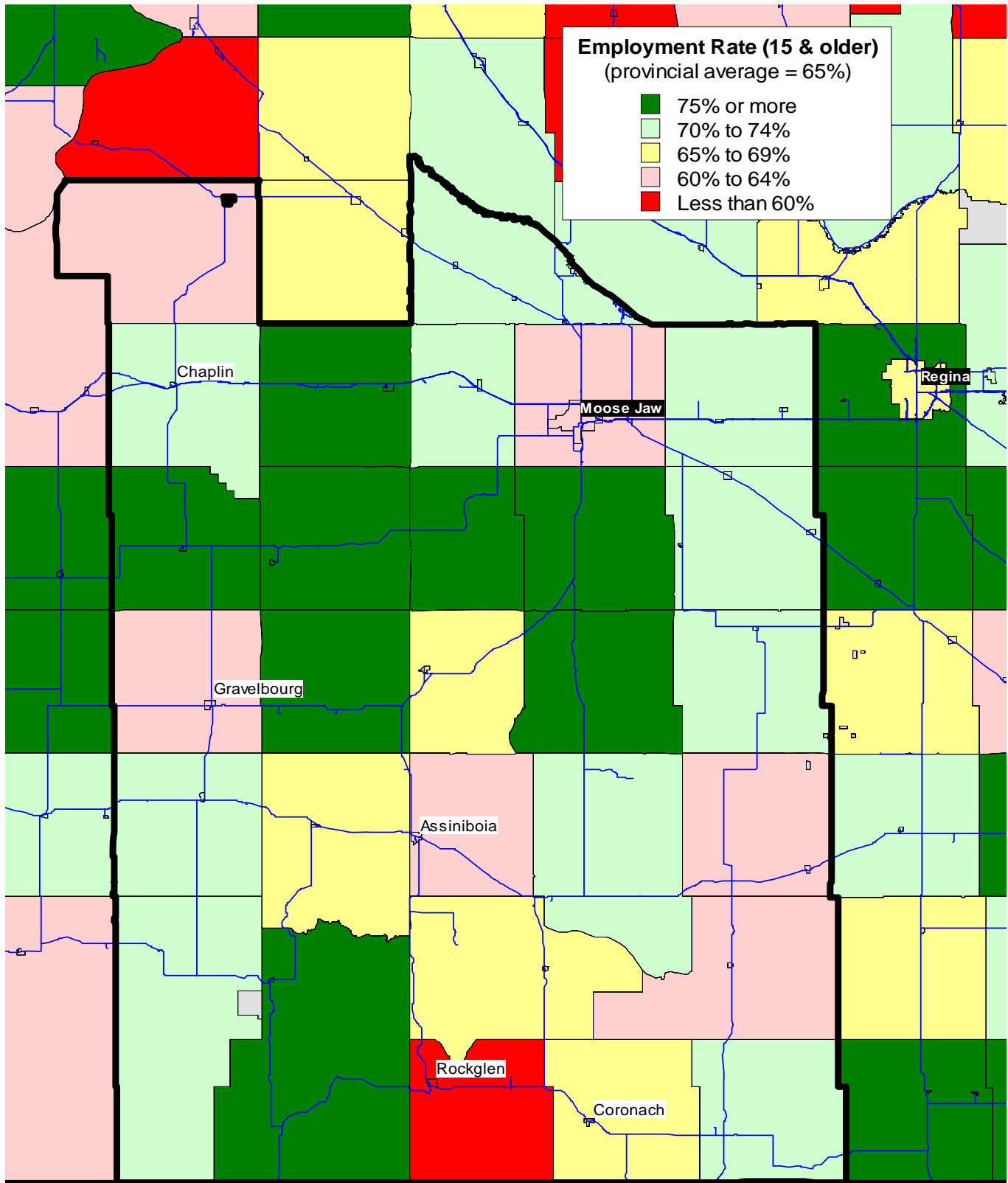
Employment Growth by Occupation Group, 2001 to 2006, South Central Enterprise Region



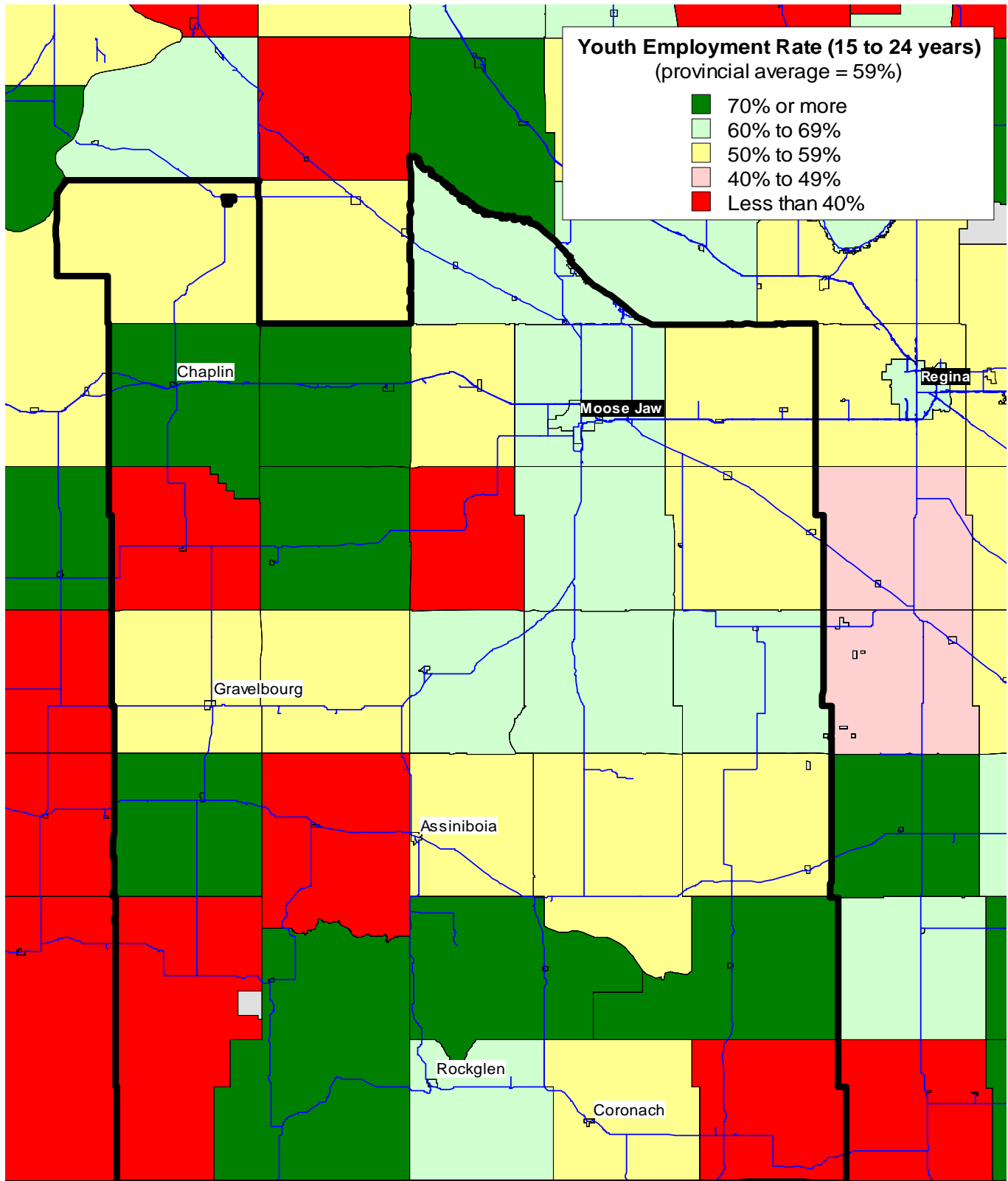
Change in Employment from 2001 to 2006



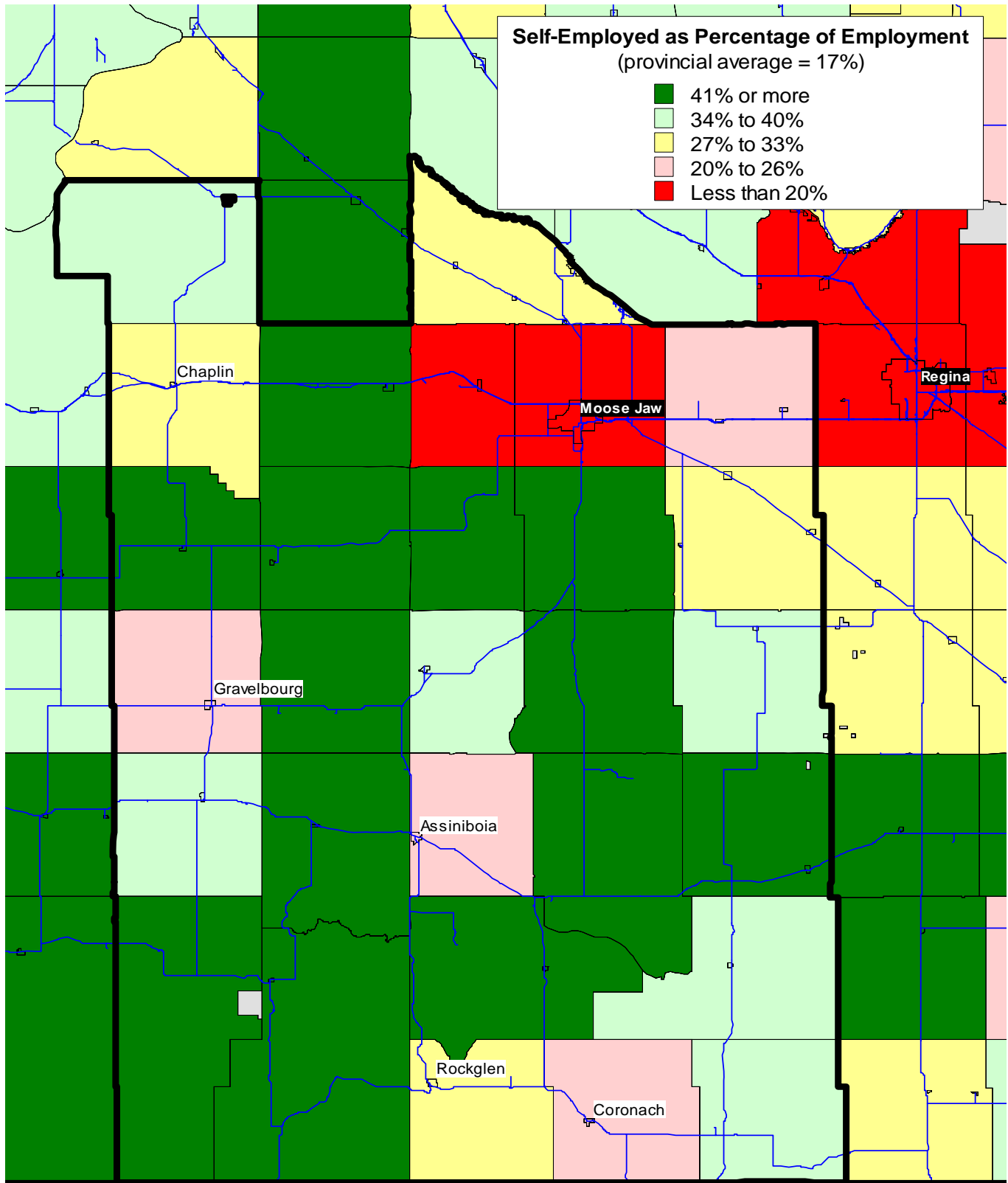
Employment Rate by RM, 2006



Youth Employment Rates by RM, 2006



Self-Employment as a Percentage of Total Employment by RM, 2006



Percent of the Employed who Work in Home Community by RM, 2006

